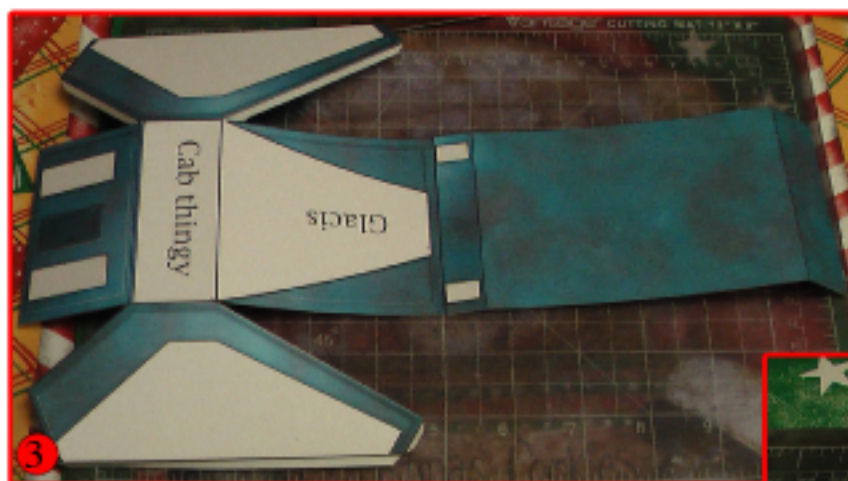


# EXTERMINATOR



Start by having a seven-year old boy design a vehicle in DOGA (1). Translate the design in Metasequoia (2).

This is a pretty simple boxy model; I started with the main body and attached the long bottom strip at the front first (3), then folded down the sides, then folded the flap under to attach it at the back (4).

The forward glacis attaches on the front and looks like the lower picture (5).



Presented by PJ +

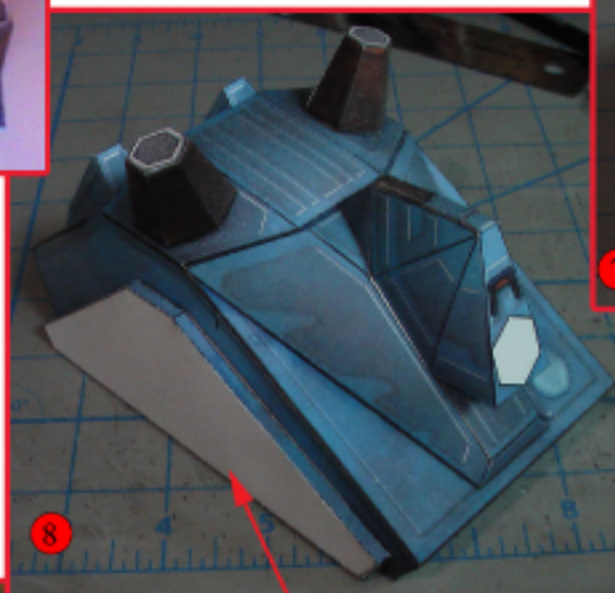


# EXTERMINATOR

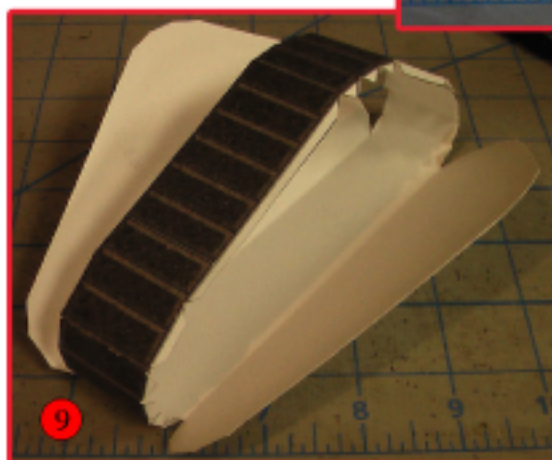
Page 2



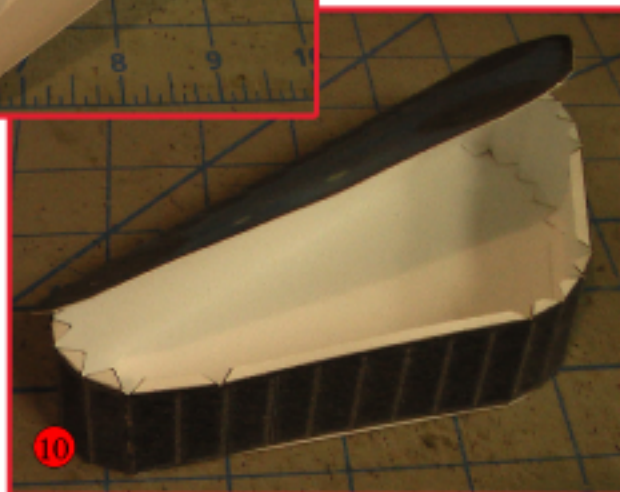
Behind the glacis piece there is a top of cab piece (6), these strange red tubes connect to it like so. I think they may be energy converters of some sort. This whole piece fits on top of the main body.



The exhaust boxes (7) fit on the back like so, flanking a door that has no use because PJ told me after the fact that this is a robot tank...maybe it's a repair hatch...



The spacers (8) are simple boxes that may be completely unnecessary; they are there to separate the tread units from the body, I like 'em. The prow with the cylon eye goes on the front, your model won't have a big water drop stain on the bow like my prototype does unless you walk outside in the rain before you've sprayed acrylic sealant on the model. PJ says it looks like battle damage.



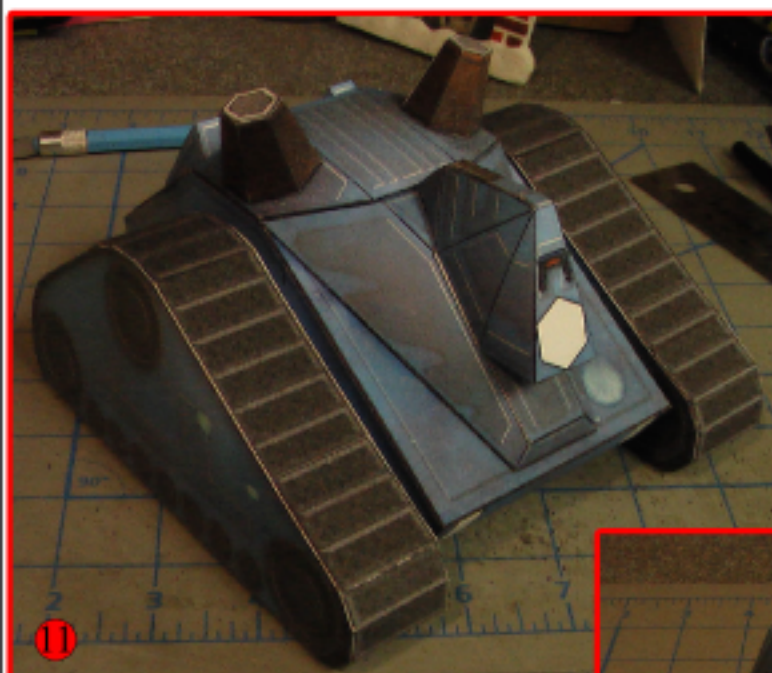
The tread units are in two pieces; attach the loose tread piece to the bigger tread piece by lining up the "A" marks. Then curl the tread around and glue it to the flap at the other end. Then carefully line up and glue one side of the tread unit. Then do the other side, which should be much easier as the tread shape is already there.

Presented by PJ +





# EXTERMINATOR



Attach the finished tread units to the spacers by lining up the white guide spaces on each piece. (11)

The main gun (12) is just a series of hexagonal tubes; roll them up and glue them shut. Line up the two gun parts and attach to the front of the prow unit. PJ claims that this is some kind of anti-matter pellet cannon.



The last bit is the little bumpers that go under the forward section of the main body. (13)  
That's it! Now go forth and crush your enemies.

Presented by PJ +

